

Features

- Extended temperature range
- Flexible Probe
- Rugged
- Reusable
- Submersible
- Programmable start time
- Real-time operation
- N.I.S.T. traceable
- User-friendly
- Low cost

Applications

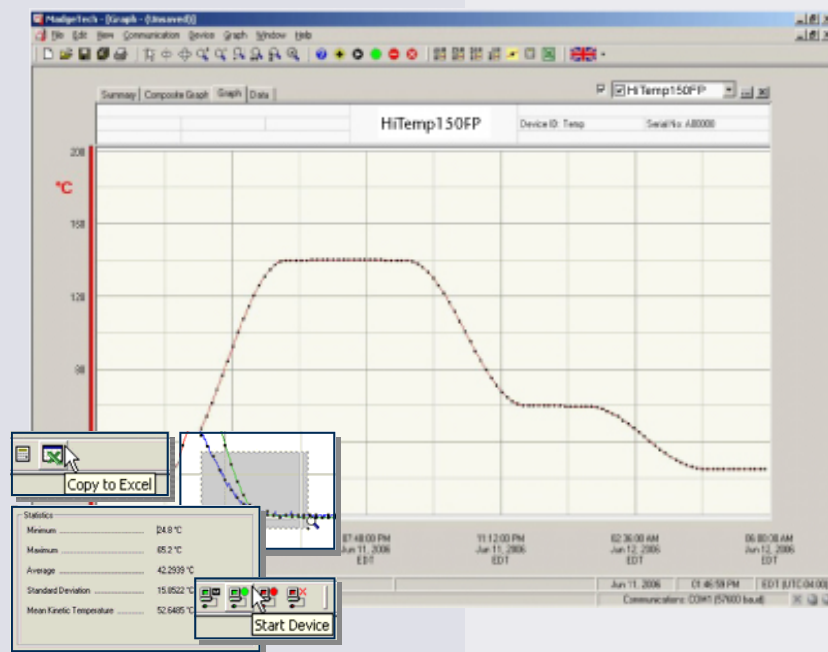
- Autoclave Verification
- Medical/Pharmaceutical
- Implement HACCP Programs
- Food preparation and processing
- Environmental studies
- Well monitoring
- Dish washer testing
- Hostile environment monitoring

The HiTemp150FP is a submersible temperature data logger that can record and be placed in temperatures between -40°C and $+150^{\circ}\text{C}$.

The HiTemp150FP features a 2' flexible probe and a 4" stainless steel sheath with 1 1/2" handle. The external probe allows for easy insertion in or the temperature point being

monitored. The body of the data recorder can be kept in another location. The rigid 4" probe houses an RTD temperature sensor which provides fast response time and accurate readings. Each reading is date and time stamped.

All LogMaster data recorders have non-volatile solid state memory, which allows the written data to remain intact, even if the battery becomes discharged. The HiTemp150FP can be set for an immediate start or at a future date and time. This allows the user to start multiple loggers, deploy them and have them all begin to take data at the same time. At least one LogMaster interface cable, serial or USB, is required to communicate with the HiTemp150FP.



LogMaster Data Recorder Software

Reports temperature data in an easy to use graph.

The Windows®-based software package allows the user to effortlessly collect, display and analyze data. A variety of powerful tools allow you to examine, export, and print professional looking data with just a click of the mouse.

Click [LogMaster Software](#) for more information or to download the software.

HITEMP150FP SPECIFICATIONS*

Temperature Sensor: 100Ω Platinum RTD	Data Format: Date and time stamped °C, °F, K, °R
Temperature Range: -40 to +150°C	Time Accuracy: ±1 minute/month at 20°C (RS232 cable not in use)
Temperature Resolution: 0.05°C	Computer Interface: PC serial or USB (interface cable required); 2,400 baud
Calibrated Accuracy: ±0.5°C	Software: Windows 95/98/ME/NT/2000/XP based software
Start Time: Software programmable start time and date, up to six months in advance	Operating Environment: -40 to +150°C, 0 to 100% RH
Real Time Recording: May be used with PC to monitor and record data in real time	Dimensions (Body): 1.1" x 1.75" (28mm x 45mm dia.)
Memory: 32,767 readings	Dimensions (Cable*): 2.0' x .14" dia. (60 mm x 4mm dia.)
Reading Interval: 1 reading every 1 second to every 12 hours	Dimensions (Probe Handle): 1½" x 3/8" (39mm x 10 mm)
Lethality Equations: Sterilization unit and Pasteurization units are available in the software with a click of a button	Dimensions (Probe*): 4" x 1/8" dia. (102mm x 4mm dia.)
Calibration: Digital calibration through software	Material (Body & Probe): 316 stainless steel
Calibration Date: Automatically recorded within device	Material (Cable): Silicone rubber
Power: 3.9V high-temperature lithium battery included	<i>*Other probe and cable lengths available upon request</i>
Battery Life: 1 year typical (1 min. reading rate @ 25°C)	Weight: 9 oz (227 g)
	Approvals: CE

WARNING: FIRE, EXPLOSION, AND SEVERE BURN HAZARD. DO NOT SHORT CIRCUIT, CHARGE, FORCE OVERDISCHARGE, DISASSEMBLE, CRUSH, PENETRATE OR INCINERATE. BATTERY MAY LEAK OR EXPLODE IF HEATED ABOVE 150° C (302° F).

SOFTWARE FEATURES

Multiple Graphs: Simultaneously analyze data from several units or deployments; easily switch to a single data series	Statistics: Calculate average, min, max, standard deviation, and mean kinetic temperature with the touch of a button
Real-Time Recording: Collect and display data in real-time while continuing to log	Export Data: Export data in a variety of common formats, or switch to Excel® with a single click
Graphical Cursor: One click displays readings by time, value, parameter or sample number	Calibration: Automatically calculate and store calibration parameters
Data Table: Instantly access tabular view for detailed dates, times, values, and annotations	Logger Configuration: Easy set up and launch of data loggers with immediate or delayed start, preferred sample rate, and device ID
Scaling Options: Autoscale function fits data to the screen, or allows user to manually enter their own values	Printing: Automatically print graphical or tabular data
Formatting Options: Change colors, line styles, plotting options, show or hide channels quickly	

*SPECIFICATIONS ARE SUBJECT TO CHANGE WITHOUT NOTICE. SPECIFIC WARRANTY AND REMEDY LIMITATIONS APPLY. CALL 1- 801-756-7055 OR GO TO WWW.THERMOWORKS.COM FOR DETAILS.

ORDERING INFORMATION

<u>Model</u>	<u>Description</u>	<u>Price (U.S.)</u>
HITEMP150FP	Extended Range Temperature Recorder with Flexible Probe	\$499.00
IFC110	Software, manual and RS232 interface cable	\$99.00
IFC200	Software, manual and USB interface cable	\$119.00
NIST	N.I.S.T. Calibration Certificate	Call for Pricing
3B5700	Replacement battery for HiTemp150FP	\$99.00

For Quantity Discounts call 801-756-7705 or email info@thermoworks.com



ThermoWorks

1762 W. 20 S. #100, Lindon, UT 84042
Ph: 801-756-7705 Fax: 801-756-8948
www.thermoworks.com