

# HACCP PDA Software Suite

## for Windows Mobile® or Palm® OS PDAs

The optional HACCP PDA Software Suite (ThermaPalm™ HACCP) is a PC application that allows a user to select/modify the information and tasks that are displayed on their PDA. This allows quality managers and inspectors to create a structured, paperless, HACCP checklist system for employees to follow. Instructions for the execution of tasks can be tailored to the manager's requirements, by the manager themselves. Real-time and date stamping using in-built PDA functions ensure that tasks are controlled and undertaken when required, not simply left until the end of the day and completed en block. Using the in-built PDA alarm functions, the user can be reminded to undertake tasks at specific times of the day.

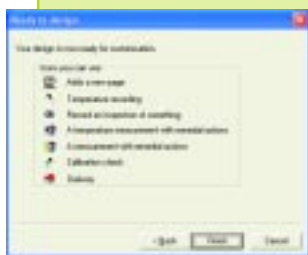
### system requirements

**Hardware** - a hand held computer running supported Palm 3.5 OS upwards or Windows Mobile® 2003 upwards with an appropriate serial connector and a PDA Thermometer Probe.

**Software** - HACCP PDA Software (ThermaPalm™ HACCP) installed on the hand held and ThermaPalm HACCP Software Suite installed on the host PC.



### what does the ThermaPalm™ HACCP Software application allow you to do?



**ThermaPalm HACCP Software Designer** - this application is an icon-based designer to allow semi-custom PDA pages to be created. When first opened, a dialogue box allows a new company and/or store to be created or an existing company and/or store to be edited or deleted. When creating a new store it is possible to base it on an existing one, to reduce the amount of input needed or to create stores that mirror one another, for a corporate image. When creating a new company, global company details, default value settings and a 32 x 32 pixel .bmp logo can be stored. The logo can either be copied in from an existing image or created within the designer. When creating a new store, company defaults can be selected via a check box or individually set for each store. When basing a new store on an existing store a drop-down list will allow selection.

The icons are the building blocks of the designer. With these you can create up to three levels of PDA pages containing tasks to be performed by operators. The designer window is split into two areas. The left-hand area is a tree view of the application being created. The right-hand area is a view of the parameters within a task or a list of tasks within a page.



FIG. 6

**add a new page** - creates a new page that can be named according to application requirements.

**temperature recording** - this task can be named according to the application needed. Upper and lower limits for the measurement can be added, as can a brief description of the method to be used for the task. If alarms have been enabled in the company set-up, an alarm time and days can be selected. Please note: the user is given three attempts to take the temperature within limits. For example, see fig. 6.

**record an inspection of something** - the task can be named according to the application needed. Actions can be activated on either a 'Yes' or 'No' answer. A brief description of three remedial actions to appear, depending on the answer, can be added. If alarms have been enabled in the company set-up, an alarm time and days can be selected. For example, see fig. 7.



FIG 7

**a temperature measurement with remedial actions** - the task can be named according to the application needed. Upper and lower limits for the measurement can be added. A brief description of the method to be used for the task can be added. A total of six (three high and three low temperature) brief remedial actions can be added, to appear if the reading is above or below the limits set, three for each limit. If alarms have been enabled in the company set-up an alarm time and days can be selected. Please note: the user is given three attempts to take the temperature within limits. For example, see fig. 8.



FIG. 8

**a measurement with remedial actions** - the task can be named according to the application needed. A brief description of the method to be used for the task can be added as can upper and lower limits for the measurement. The units of measurement can be added, i.e. litres, kilos, metres etc. A total of three brief remedial actions can be added to appear if the reading is outside the limits set. If alarms have been enabled in the company set-up an alarm time and days can be selected. For example, see fig. 9.



FIG. 9

# ThermaPalm™ HACCP Software Suite

## HACCP Software for the PDA Thermometer Probe



FIG. 10

**calibration check** - the calibration check consists of two separate points at which the temperature probe can be checked, for example see fig. 10. The temperature descriptions can be changed to suit the application. A temperature range can be added to automatically give an 'accept' or 'failed' status to the calibration results, for example see fig. 11. This range has a maximum  $\pm 10^{\circ}\text{C}/^{\circ}\text{F}$  window on the temperature. A brief description of the method to be used can be added. If alarms have been enabled in the company set-up, an alarm time and days can be selected. A 4-digit entry PIN number can be allocated for a calibration task. This ensures that only authorised staff can access this function. The user is given three attempts to take each temperature within limits before failure is reported. If either or both temperature checks fail, a failure is reported.



FIG. 11



FIG. 12

**delivery** - the task can be named according to the goods being delivered, for example see fig. 12. A supplier name can be added as a delivery note number, vehicle registration number and receipt signature, also a brief description of the method needed for the task can be added. A temperature measurement can be requested, in which case upper and lower limits for the measurement can be included. Check boxes for 'accept' or 'reject' will be displayed. For example see fig. 13. A note can be added so that a reason for rejecting can be stored. The user is given three attempts to take the temperature within limits.

**barcode reading** - the ThermaPalm HACCP Software Suite, when used with a PDA that incorporates a barcode scanner, for example, a Symbol SPT 1800 enables the user to identify products or equipment automatically. Utilising a barcode with a scanner helps to eliminate user inputting errors and, when combined with the Palm Thermometer Probe, creates a truly paperless HACCP inspection system.



FIG. 13

### Output Designer enables managers to create personalised reports

Within the ThermaPalm HACCP Software Suite is an Output Designer that enables the user to create a personalised output file (pdf format). The Output Designer window is split into three areas. The left-hand area is a view of the .pdf page of the report. The upper right-hand area is a tree view of the application on the PDA. The lower right-hand area is a list of the parameters within the task selected in the upper right-hand area. To place the item description onto the report page, right-click, drag and drop the parameter. To place the result or value corresponding to the parameter, left-click, drag and drop. To aid alignment of the parameters in the report a grid is available in the 'View' drop-down menu. The default grid is 5mm spacing but this can be adjusted as required using 'Set Grid Width'. Turn the grid on and off using 'Show Grid Lines' and allow alignment using 'Snap To Grid'. Text or pictures can be added to the report by clicking the relevant icon and either typing in text or selecting a picture from file.

### reminder application

Within the ThermaPalm HACCP Software Suite is a reminder application. This application reminds the PC user that a PDA needs ActiveSyncing or HotSyncing at a set time. If more than one PDA is associated with the PC then ActiveSyncing or HotSyncing can be staggered by setting a different time for each one. There is also a facility to archive the .pdf documents in weekly, monthly, or annual folders by clicking on 'Options' and 'Configure Archiving'.

Weekly folders will be numbered 1 to 52, monthly folders named January to December and yearly folders with the year i.e. 2005. Weekly and monthly folders will automatically be put in yearly folders. The archive week runs from Monday to Sunday. Archiving is done when the reminder application is started. In order to auto-archive on a regular basis this application needs to run all of the time, minimised in the sys-tray. To achieve this, place a short cut to the application in the start menu, Programs, Startup folder.

*Please note: the following order codes are for single user software, for multi-user software, please contact the ETI sales office for further details*



ThermoWorks

1-800-393-6434

www.thermoworks.com



FM38039