

RTR-500GSM Configuration Guide

First Things First

Ver. 1.11

I) A Note About User Documentation

In order to avoid a thick and complicated manual, most of the user documentation for the RTR-500GSM is based in two Help files, both of which are found in the Help pull down menu. As strange as this may sound, TandD's Help Files really are helpful. There is a lot of information on the use of the Settings Utility in the Help file, and if you don't find the answer to your question there try the Operation Guide.

II) About SIM Cards & Accounts

In order to use the RTR-500 GSM you will need to have a SIM card from a GSM Service Provider. In the US this would be either AT&T or T-Mobile. There are several GSM providers in Canada, most notably Rogers. The RTR-500GSM can use any standard voice account SIM that supports GPRS Data (Web and Email) and has funds applied for Data; **THIS IS A MUST**. The account can be either pre-paid or post-paid, and can be purchased at retail outlets. Since the RTR-500GSM is a data only device, the number of voice minutes or cost per voice minute of the account you choose are not important as no voice minutes will be used by the device.

III) Install the SIM card

Remove the battery cover from the RTR-500GSM and install the SIM card. If you have questions about how to do this refer to the Introductory Manual. It has detailed instructions starting on Page 19 for this that are quite complete. Don't forget to install the batteries after the SIM card is in place.

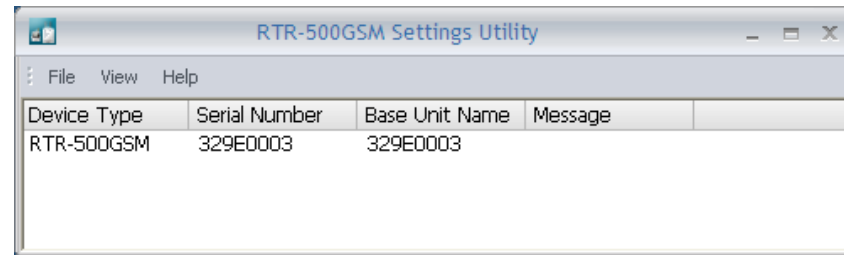
IV) Install the Software

Make sure that USB driver installs correctly. There are very complete instructions for this in the Introductory Manual starting on Page 25.

Getting Started

I) Connect the RTR-500GSM to your PC

First make sure the Run / Stby switch is in the Stby position and plug in the A/C adapter. Next plug the RTR-500GSM into a USB port on your PC. The RTR-500GSM Settings Utility should open automatically as shown here. If not, go to your Start Menu and open the software.



II) Check the Following Points

- A) Check the LED's on the front of the RTR-500GSM unit. If the orange ERR LED is on steady there is a problem with the SIM card. It is either installed incorrectly, invalid, locked or defective. You can go no further until this condition is corrected.
- B) In the normal case you should see the green PWR LED turn on steady for a bit, blink for a few moments while the unit communicates with the PC through the USB connection, and then remain on steady. The unit can take its power from the USB port but not all functions will be enabled. Make sure you install the batteries or plug in an A/C adapter to continue, even though the unit seems to be working fine at this point.
- C) After downloading for a few moments you should see the RTR-500GSM appear in the Settings Utility window, as shown above. If this does not happen, the most likely cause is a problem with the USB driver which needs to be corrected before proceeding. Again, there are very complete instructions for installing the USB driver in the Introductory Manual starting on Page 25.
- D) At this point, the first time a new RTR-500GSM is connected the Initial Settings Wizard should open. If it doesn't you can open it manually by clicking on View > Initial Settings Wizard from the pull down menu. For subsequent connections the main settings window would open.

Initial Settings Wizard

The Initial Settings Wizard allows you to quickly enter the basic information needed to connect through the cellular system for which you have opened an account.

I) Setting the APN

The APN (Access Point Name) tells the system which server to use for sending data and SMS messages to and from the RTR-500GSM. This should be set to “wap.cingular” for AT&T accounts or epc.tmobile.com for T-Mobile.

II) User ID and Password

Unless instructed otherwise when you obtain your account, this should be left blank. The wap.cingular access point does not require User IDs or Passwords.

III) Test the Network Connection

When you click on the Next button you will be offered the opportunity to send a test SMS message. This should be done, as it tests the unit’s basic connection to the network. Just enter the phone number of an SMS capable cell phone and click the Send button. If the test message does not arrive in short order there is a fundamental problem with the unit’s network connection which needs to be troubleshot before proceeding to the Main Settings Window.

(Note: A successful SMS test will verify your basic account and connection with the carrier, but it **does not confirm the data account**. This is done with the Transmission Tests described in Section 11.

RTR-500GSM Initial Settings Wizard 3/5

Enter the necessary information for connecting to a cell phone system.

GPRS Settings

APN (Access Point Name) wap.cingular

User ID

Password

< Back Next > Cancel Help

RTR-500GSM Initial Settings Wizard 4/5

This will carry out an SMS transmission test. Enter the phone number of the recipient. If this test is not necessary, click "Next".

Recipient 1235551212

SMS Transmission

If you have trouble: Open [The SMS does not get through, what should I do?](#)

< Back Next > Cancel Help

Test Message Failures

If your test SMS Transmission completed successfully you can skip this section. If it did not, however, you will most likely see a Transmission Failure message like the one pictured here. There is a complete list of Error Codes in the Documents section of the Operation Guide. Some of the more likely failure codes and their causes are as follows:

Note: Using the SIM card to send an SMS message from a cell phone does not confirm that the GPRS plan is active. To do this you must be able to send an email from the phone.

1) Failure Code 7320 - 30030

No GSM connection or signal from the Cell Tower. Most likely, the RTR-500GSM is either not in a Cell system service area or is in a “dead zone”. Try relocating the unit near a window. Radio reception can be poor in steel reinforced concrete buildings.

2) Failure Code 7320 -30013

Failure to locate APN: The APN entered in the Initial Settings Wizard cannot be found. Double check the entry. It should read “wap.cingular” for the AT&T system.

3) Failure Code 7326 - 30000

Failure to log onto APN or to find destination phone. Check that the User ID and Password for the APN are correct and that the phone number you entered is a valid one.

4) Failure Code 7320-30007

Failure to recognize SIM card: The most likely cause for this is a bad connection. Try reseating the SIM card in the holder.

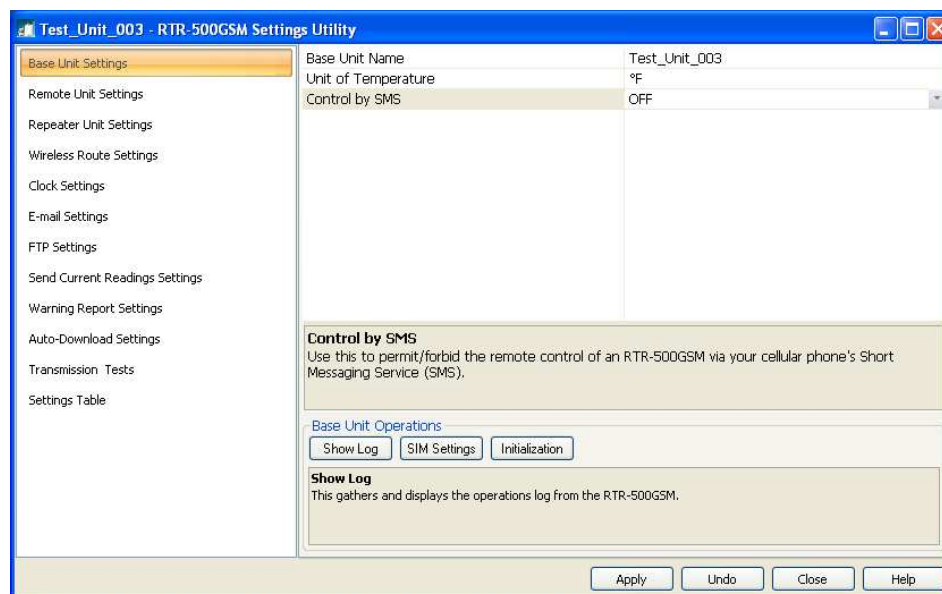


The RTR-500GSM Settings Window

I) The Settings Process

Making settings to control the operation of the RTR-500GSM is a remarkably straightforward process that is all accomplished through the Settings Window, shown here. The window is divided vertically in two, with page selections in the left hand pane and page contents on the right. Settings are made by selecting a settings page from the pane on the left and then filling in the entries in the page on the right. The process starts with the top page (Base Unit Settings) and then moving down the page list, making the settings page by page, until the last page has been completed.

AFTER MAKING SETTINGS BE SURE TO CLICK ON “APPLY” BEFORE LEAVING EACH SCREEN



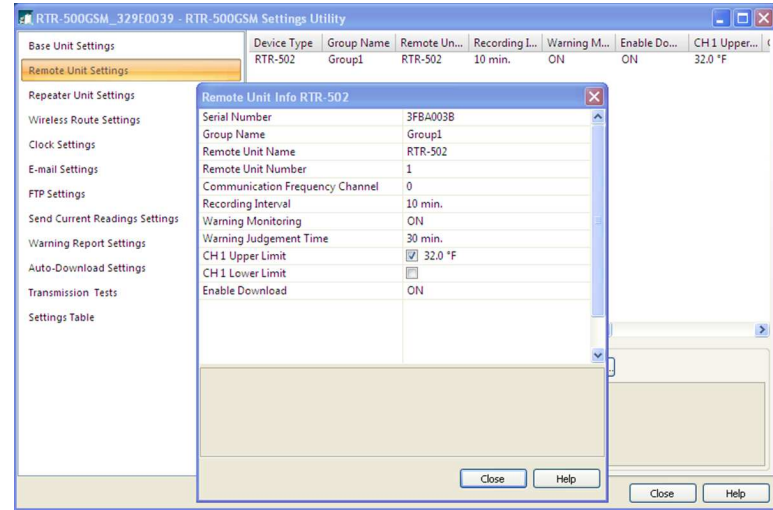
1. Base Unit Settings

There is not much to discuss here. Enter the name for your base and the units of temperature measurement you want to use. Leave Control by SMS Off to start with. It can be turned on later if you intend to use this feature. Not that the unit's Log File can be downloaded from this screen (Show Log button). This may be used by your distributor's tech support specialist in helping you troubleshoot system problems.

2 Remote Unit Settings

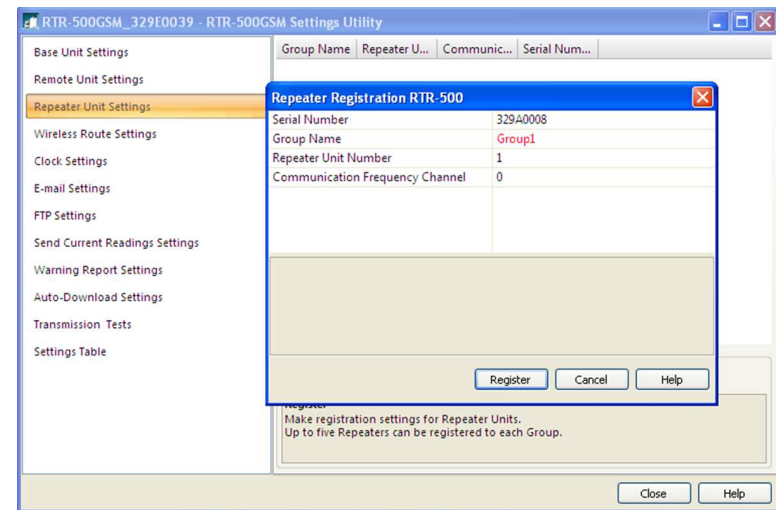
The Remote Unit Settings screen is used to register Loggers to the system. When a Logger is placed on the 500GSM you can set, via optical communication, the Logger recording parameters, assign it to a logical group and give it a logical name, set the RF communication channel, enable warning monitoring and set the upper and lower reading limits which trigger warnings. Every Logger that is to be monitored or downloaded by the RTR-500GSM must be registered to it using this screen.

One note about Warning Monitoring: When you set Warning Monitoring to On for a logger you will have the option to enter a **Warning Judgment Time**. This is not the warning sampling Interval, which is fixed at 10 minutes for the RTR-500GSM. This time is the duration that the set limit must be exceeded before a warning notification will be sent.



3 Repeater Settings

If you intend to use wireless repeaters in your system to address communication range issues you will use this screen to register them. If not, you can skip this section (screen) entirely. The only tricky part here is that in order to register a repeater to your system you will need to plug an RTR-500 into a USB port on your PC with the Repeater Setting screen selected. You can do this by plugging it into a 2nd USB port on your PC, or by unplugging the 500GSM and using its USB connection for the repeater. Once the RTR-500 is connected click the "Register" button in the Repeater Setting screen. Make the appropriate entries in the pop-up window and click on Register. The repeater will now be listed in the Repeater Settings screen. When finished disconnect the RTR-500 from the USB port and reconnect the 500GSM.

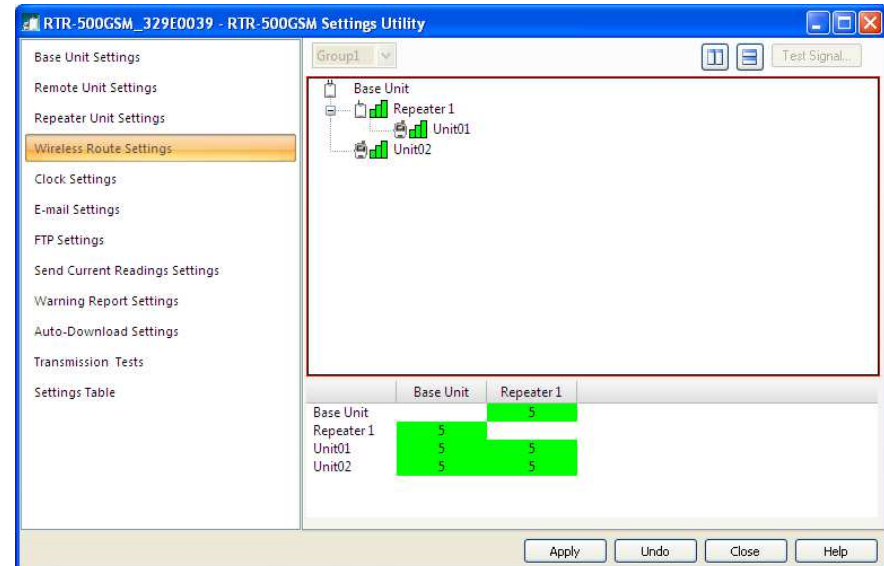
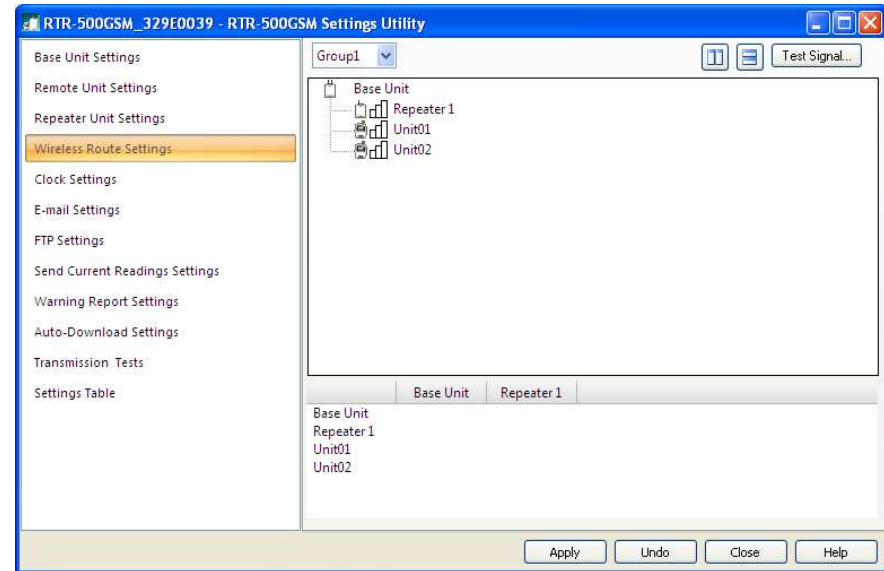


4 Wireless Route Settings

In this screen we can see that this system has two Loggers and one Repeater registered. Initially after registration the software automatically assigns all devices to communicate directly with the RTR-500GSM, as shown in the screen to the right. This may be fine in some cases, but if you are using a repeater it is probably not what you want. To change the communication path for a device simply drag and drop it on top of the device you want it to connect through. In the 2nd screen to the right you can see that Unit 01 has been dragged to communicate through the repeater. (Don't forget to click "apply" after changing a device's communication route.) Even if you have no repeaters in your system you will want to do the next step below.

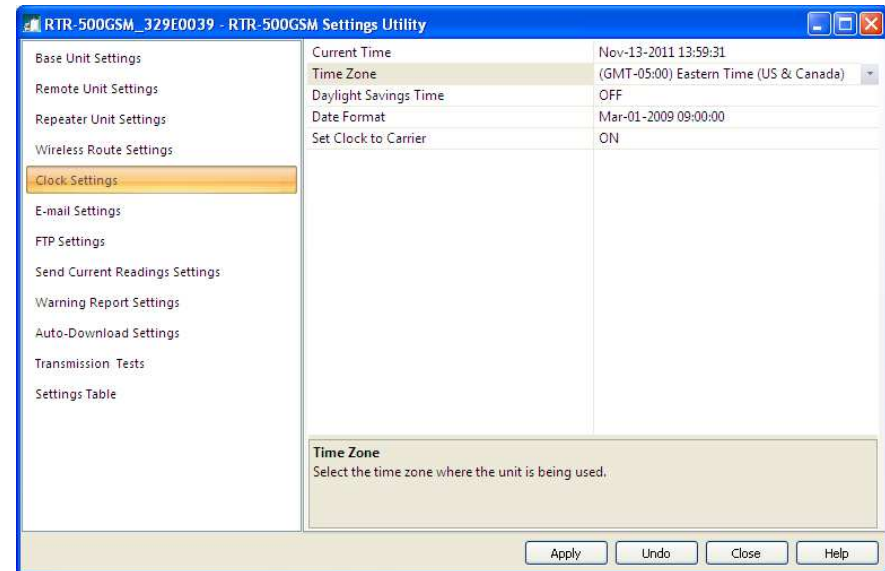
There is something else shown in this 2nd screen that is very interesting and useful. That is the results of the Signal Strength Test. Clicking on the Test Signal button will cause the system to perform an RF signal strength test for all registered communication paths and display the results. In this case we can see that all routs are 5 / Green, which is as good as it can get.

NOTE: This test can be very useful in troubleshooting intermittent communication errors. When the RTR-500GSM and Loggers are in place perform this test. If there are results in the 1 or 2 category intermittent communication problems are likely.



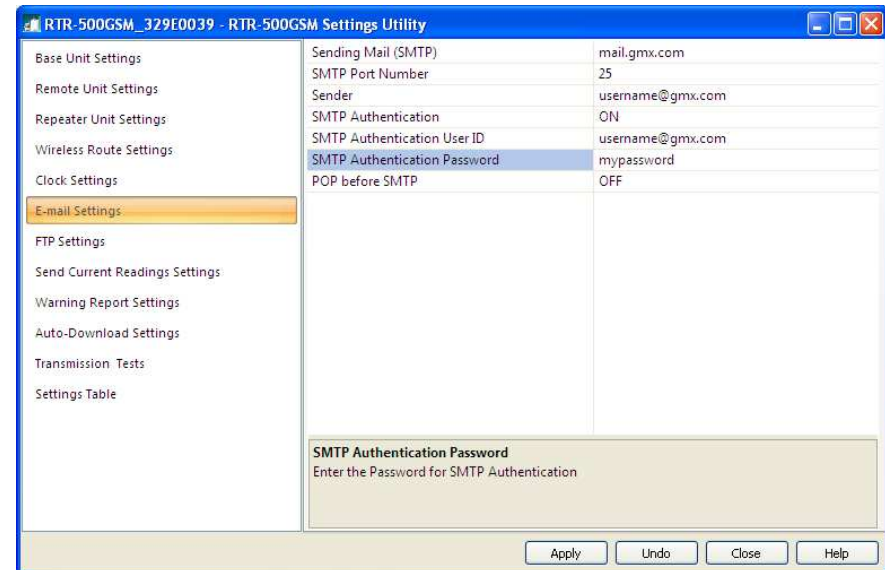
5 Clock Settings

This is the screen where you set the RTR-500GSM's internal clock. You can set the current time to match your PC or to another time, for example if you are planning to deploy the unit in a different time zone. It is important to do this because with firmware versions 1.03 and below, even if you turn "Set Clock to Carrier" on, it will only adjust the minutes (for accuracy purposes) but not the hour (for time zone purposes). This is corrected in later firmware versions to take the entire time and date from the carrier.



6 Email Settings

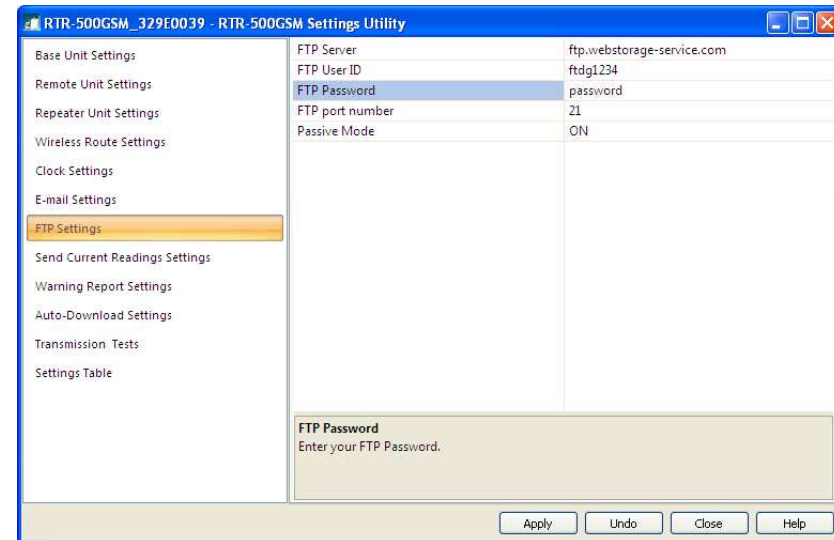
This screen is where you make the settings for the server you will be using to send Emails for Warnings, Data Downloads or Current Readings, should you choose to do so. You will need to determine the type of authentication, if any, required by your Email server. The RTR-500GSM supports either SMTP Authentication or POP Before SMTP. For SMTP Authentication the RTR-500GSM uses the LOGIN protocol. If you are unsure about this you should check with your Service Provider, your IT Specialist, or you can try using the "ehlo" command as described in the appendix at the end of this guide.



A Note About Free E-Mail Service: Some of the most popular free e-mail services, such as **Gmail** and **Hotmail**, use SSL encryption, which the RTR-500W does not support. Because of this, these services cannot be used to send warning or data Emails. There is, however, an excellent free POP3 Email service provided by GMX which has been tested to work with the RTR-500GSM. An account for free POP3 Email service can be quickly established at www.gmx.com. When setting up the RTR-500GSM for a GMX account use the settings shown above:

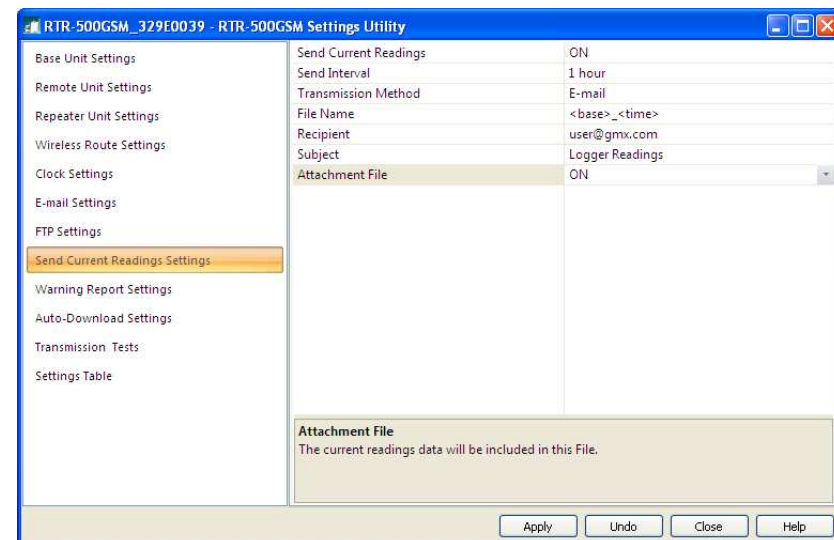
7 FTP Settings

This screen is where you make the settings for transferring data from your loggers to an FTP server, should you choose to do so. If you do not have access to a local FTP server, as a TandD customer you are welcome to set up a free WebStorage Service account on TandD's server. Use this link: <http://www.webstorage-service.com/services/> to learn more about TandD's free WebStorage Service and to set up your account. Typical settings for a WebStorage Service account are shown in the screen capture on the right.



8 Settings For Sending Current Readings

Now that the RTR-500GSM knows where to send data you will want to tell it what data to send and how to do it. The first data type is Current Readings from the loggers. If you want Current Readings to be sent make sure to set the first line item to ON. Then select an interval and a method of sending, for which there are 3 choices. The first is to send via Email. If you select this you will have the option



of having an XML file with the readings included as an attachment. The next choice is to send via FTP. This will result in an XML file with the Current Readings being uploaded to the specified FTP server and the selected sending interval.

If you select FTP you should be aware that if you choose <base> for the File Name each upload will overwrite the previous one, so that there will be only one file created on the server. If you want to create a sequential series of files you will need to select a File Name that includes <time>. If you are uploading to a WebStorage account be sure to leave the Recipient Folder entry blank.

9 Warning Report Settings

To enable warning reports to be sent when loggers go into an alarm condition set Warning Monitoring to On. Warnings can be sent to up to four recipients. These can be either Emails or SMS messages to cell phones. To send a warning message as an SMS simply enter the mobile phone number in the Recipient field. Note that warnings will only be sent for loggers that have had Warning Monitoring set to On during remote unit registration. When the alarm condition has ceased to exist a Recovery message will be sent.

Note: The RTR-500GSM is triggered by transitions from normal to alarm condition, and visa versa. When testing this function before deploying it is important to understand that a warning will not be sent if the logger is already in an alarm condition when the unit is first placed into Run. In order for an alarm to be sent the logger must be first in a normal condition and then move into alarm.

The screenshot shows the 'RTR-500GSM Settings Utility' window. The left sidebar has 'Send Current Readings Settings' selected. The main area displays the following settings:

Send Current Readings	ON
Send Interval	1 hour
Transmission Method	FTP
File Name	<base>_<time>
Destination Folder	

Buttons at the bottom: Apply, Undo, Close, Help.

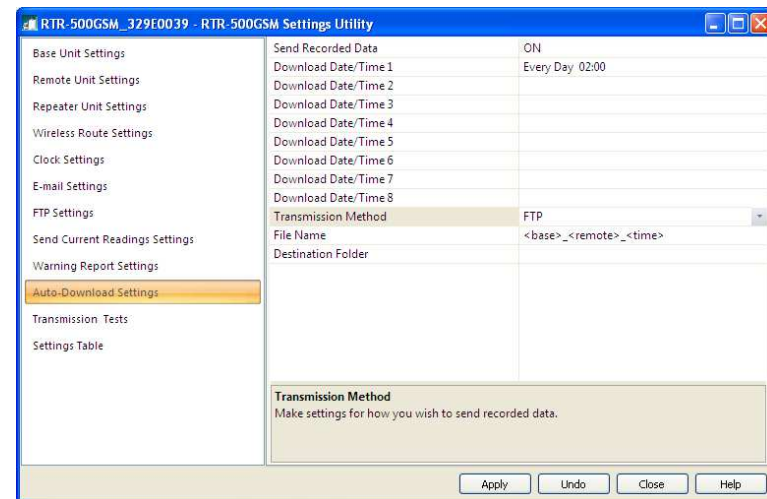
The screenshot shows the 'RTR-500GSM Settings Utility' window. The left sidebar has 'Warning Report Settings' selected. The main area displays the following settings:

Send Warning Reports	ON
Recipient 1	username@gmx.com
Recipient 2	
Recipient 3	
Recipient 4	
Subject	Logger Warning
Comment	There is a problem!

Buttons at the bottom: Apply, Undo, Close, Help.

10 Send Recorded Data Settings

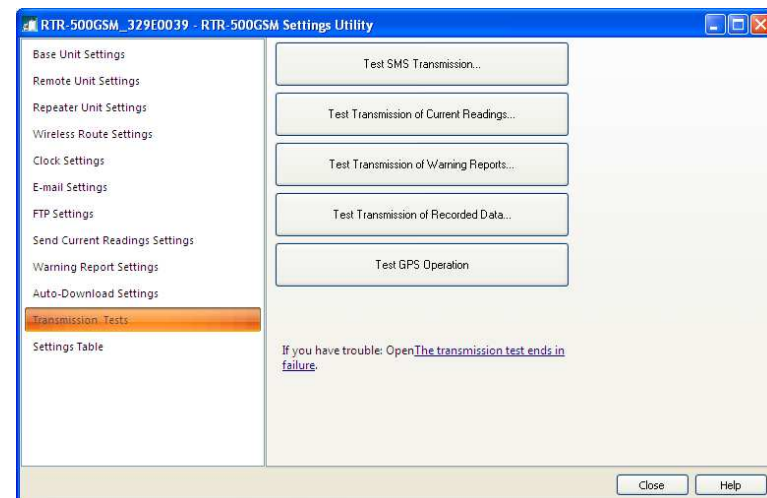
This is the screen where downloads of the data recorded by the loggers are enabled, the frequency of downloads is specified and the transmission method is set. Recorded Data is delivered as a .trz file, which is viewable using TandD's Graph software, and can be sent as frequently as eight times per day. Note that the selected transmission method applies to all times specified. Again, if transmission via FTP is selected and <time> is not included in the File Name, each transmission will overwrite the previous one, resulting in a single data file residing on the server no matter how many uploads are made. Also, as with sending Current Readings, it is important to note that if Recorded Data is being sent to a WebStorage Service account the Recipient Folder entry must be left blank.



11 Transmission Tests

The Transmission Test window is a useful tool for checking the settings you have made. The Transmission Tests determine if communication can be established via the specified method without errors being returned (no actual data is sent). It is highly recommended that you use these tests to confirm the server and logon information that you have entered before putting the RTR-500GSM into service. You will want to correct any entry errors before you deploy the unit to a remote or mobile location.

If you receive an error message for any of the tests, try it a few times. Sometimes the connection through the cell network takes a bit to establish. If the error message persists refer to the Error Code List in the Operation Guide.



Setting the RTR-500GSM to Run

Once you have completed making all the settings, unplug the USB cable from the RTR-500GSM. When you are ready to deploy the unit, and any loggers that are registered, simply place the Run / Stby switch to the Run position. When the switch is in Run and all is well, the green Power LED will blink; slowly when in idle and a network connection is established, and more rapidly when an active communication process is taking place.

- If the orange ERR LED is blinking by itself, this is usually an indication that communication with the Cell network cannot be established. It is normal for this to happen for a while when the Run / Stby switch is first placed into the Run position, as it takes a few moments for the unit to sign on to the network. If the condition persists it is likely the unit is not in a GSM service area.

- If you see the orange ERR and green Power LEDs blinking together this is an indication that either there is no data logger registered to the unit or no active process has been set within the utility (all monitoring and downloading functions are set to OFF).

- The red ALM LED will blink when the limit conditions for any registered logger have been exceeded. It will continue to blink while the condition persists and will extinguish once the readings are back within limits and a “recovery” message has been sent.

Important Note: The 500W will show an error condition (ERR LED blinking) unless at least one Logger is registered and it is set to perform at least one action (Send Current Readings, Send Recorded Data or Send Warning Reports.)

LED	Status	Reason	Comments	
POWER	BLINKING	Run	If the RTR-500GSM is outside communication range, the LED lamp will go off.	
	Blinking Rapidly	Communication in progress	Wireless Communication or GSM Communication is in progress.	
	Off	Outside of communication range		
ERR	BLINKING	- No Remote Unit Registration - Outside of Communication Range		
	ON	- No SIM card - PIN number does not match	- When no SIM card has been installed - The PIN number set in the RTR-500GSM does not match the card that has been installed	
ALM	BLINKING	During Warning	Remote Unit	- When a Upper or Lower Limit has been exceeded - When the Battery Level is low - When a sensor error has occurred - When a wireless communication error has occurred
			Base Unit	- When external power has been lost (only when batteries are installed) - When Battery Level is low - When external contact input has occurred

*Determining E-Mail Authentication Type

This procedure can be used with many E-Mail servers to determine what authentication will be accepted.

1) Open the Cmd prompt. Then type:

```
telnet <server_name>  
<smtp_port_no> (return)
```



```
Command Prompt  
Microsoft Windows XP [Version 5.1.2600]  
(C) Copyright 1985-2001 Microsoft Corp.  
C:\Documents and Settings\Steve Knuth>telnet smtpauth.earthlink.net 25_
```

2) After server response, Type:

```
ehlo <your_domain_name> (return)
```



```
Telnet smtpauth.earthlink.net  
220-elasmtp-galgo.atl.sa.earthlink.net ESMTP Exim 4.67 #1 Sat, 05 Dec 2009 13:02:52 -0500  
220-NO UCE. EarthLink does not authorize the use of its computers or network equipment to accept, transmit, or distribute unsolicited e-mail.  
ehlo earthlink.net_
```

3) The server will respond something like the following:

In this case you can see that Earthlink accepts PLAIN, LOGIN and CRAM-MD5 smtp authentication. Since LOGIN is accepted the RTR-500W will work fine with this server.



```
Telnet smtpauth.earthlink.net  
220-elasmtp-galgo.atl.sa.earthlink.net ESMTP Exim 4.67 #1 Sat, 05 Dec 2009 13:02:52 -0500  
220-NO UCE. EarthLink does not authorize the use of its computers or network equipment to accept, transmit, or distribute unsolicited e-mail.  
ehlo earthlink.net  
250-elasmtp-galgo.atl.sa.earthlink.net Hello earthlink.net [69.204.176.177]  
250-SIZE 14680064  
250-PIPELINING  
250-AUTH PLAIN LOGIN CRAM-MD5  
250-STARTTLS  
250 HELP
```