

QUICK START GUIDE



ThermoWorks

1

FIRST INSTALL YOUR BATTERY

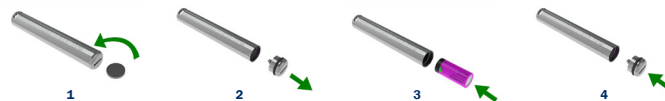
TW-USB-1, TW-USB-1-LCD, TW-USB-2, TW-USB-2+, TW-USB-2-LCD, TW-USB-2-LCD+, TW-USB-TC, TW-USB-TC-LCD

Before using the data logger you will need to insert the 3.6V 1/2AA battery provided, following the instructions below. Replacement batteries available from www.thermoworks.com, PN: BAT 3V6 1/2AA.



TW-USB-1 PRO

Before using the data logger you will need to insert the 3.6V 2/3AA High Temperature battery provided, following the instructions below. Replacement batteries available from: www.thermoworks.com, PN: BAT 3V6 2/3AA H TEMP.



TW-USB-1-RCG BATTERY IS PREINSTALLED

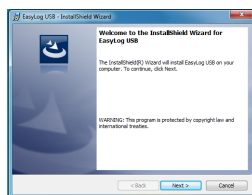
To charge the battery, connect to USB port until green LED shows.

2

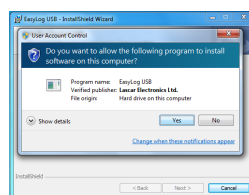
THEN DOWNLOAD AND INSTALL YOUR SOFTWARE & USB DRIVER

Windows™ XP/VISTA/7

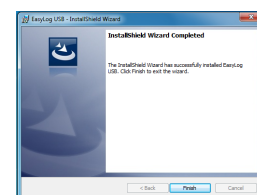
1. Visit www.thermoworks.com/software and click 'download' on the EasyLog USB Software.
2. Click on the downloaded file and hit extract all files.
3. Open the EasyLogUSB file and double-click on 'Setup.'
4. Click on 'Run.'



5. Click 'Next'



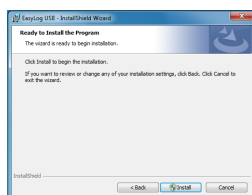
8. Click 'Yes'



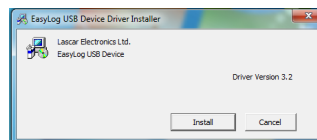
9. Click 'Finish'



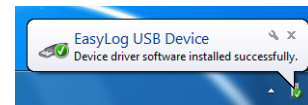
6. Read the 'IMPORTANT NOTICE', select 'I agree' and 'Next'



7. Click 'Install'



10. Click 'Install'



11. You have successfully installed the necessary software and driver for your TW-USB data logger. An 'EasyLog USB' icon will be placed on your desktop.

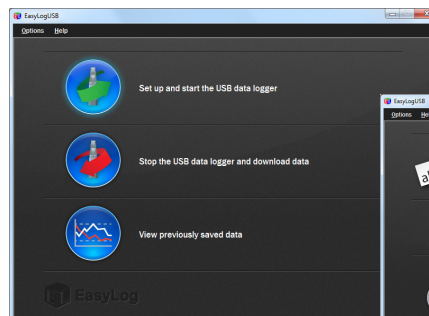
3

YOUR DATA LOGGER IS READY FOR USE

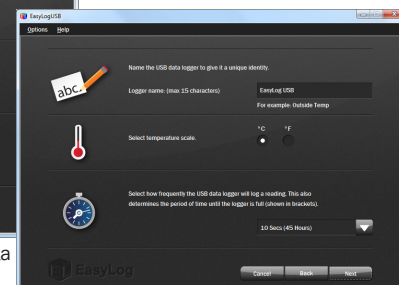
- Ensure the battery is correctly installed.
- Insert the data logger into an available USB port on your PC.
- Double click on the EasyLog USB icon on your Windows™ desktop. This will load the configuration software. Setup the data logger for a new log, download a data logger that has been recording, view previously saved data in graph format, and check the current status of the attached data logger (including the serial number).
- When setup is complete, the data logger should be removed from the USB port to begin recording. If you would like advice on how best to use the data logger for a particular application, please contact your nearest ThermoWorks representative.
- **Do not leave your data logger in the USB port as this will cause some of the battery capacity to be lost** (with the exception of TW-USB-1-RCG; see '1. First Install Your Battery' for further information).



EasyLog USB



Set-up, stop or view previously saved data



Name your logger and select a sample rate

SPECIFICATIONS

Part No	Function	Range	Accuracy (overall error) Typ. Max.		Readings	Battery	Battery Life*
TW-USB-1	Temperature	-35 to 80 °C (-31 to 176 °F)	±1°C (±2°F)		16,382	3.6V ½AA	1 year
TW-USB-1-LCD	Temperature with LCD	-35 to 80 °C (-31 to 176 °F)	±0.5°C (±1°F)	±1.5°C (±3°F)	16,382	3.6V ½AA	1 year
TW-USB-1-PRO	Extended Temperature	-40 to 125 °C (-40 to 257 °F)	±0.2°C (±0.4°F)		32,510	3.6V ¾AA	3 years
TW-USB-1-RCG	Temperature with rechargeable battery	-20 to 60 °C (-4 to 140 °F)	±1°C (±2°F)		32,510	Lithium Ion	1 month (rechargeable)
TW-USB-2	Temperature, Humidity & Dew Point	-35 to 80 °C (-31 to 176 °F) 0 to 100%RH	±0.5°C (±1°F)	±2°C (±4°F)	16,382	3.6V ½AA	1 year
			±3%RH	±6.0%RH	16,382		
TW-USB-2+	Increased Accuracy Temperature, Humidity & Dew Point	-35 to 80 °C (-31 to 176 °F) 0 to 100%RH	±0.3°C (±0.6°F)	±1.5°C (±3°F)	16,382	3.6V ½AA	1 year
			±2.0%RH	±4.0%RH	16,382		
TW-USB-2-LCD	Temperature, Humidity and Dew Point with LCD	-35 to 80 °C (-31 to 176 °F) 0 to 100%RH	±0.5°C (±1°F)	±2°C (±4°F)	16,382	3.6V ½AA	1 year
			±3.0%RH	±6.0%RH	16,382		
TW-USB-2-LCD+	Increased Accuracy Temperature, Humidity and Dew Point with LCD	-35 to 80 °C (-31 to 176 °F) 0 to 100%RH	±0.3°C (±0.6°F)	±1.5°C (±3°F)	16,382	3.6V ½AA	1 year
			±2.0%RH	±4.0%RH	16,382		
TW-USB-TC	Thermocouple (J, K and T-type)	-200 to 1350°C (-328 to 2462°F) (K-type) -200 to 1190°C (-328 to 2174°F) (J-type) -200 to 390°C (-328 to 734°F) (T-type)	±1°C (±2°F)	±2°C (±4°F)	32,510	3.6V ½AA	6 months
TW-USB-TC-LCD	Thermocouple with LCD (J, K and T-type)	-200 to 1350°C (-328 to 2462°F) (K-type) -200 to 1190°C (-328 to 2174°F) (J-type) -200 to 390°C (-328 to 734°F) (T-type)	±1°C (±2°F)	±2°C (±4°F)	32,510	3.6V ½AA	6 months

*Depending on logging rate, ambient temperature, and use of alarm LED

LED FLASHING MODES

LCD INDICATORS (TW-USB-1-LCD, TW-USB-2-LCD, TW-USB-2-LCD+ & TW-USB-TC-LCD ONLY)

TW-USB-1	TW-USB-2, TW-USB-2+, TW-USB-2-LCD & TW-USB-2-LCD+	TW-USB-1-LCD, TW-USB-1-RCG, TW-USB-TC & TW-USB-TC-LCD	DISPLAY AND STATUS FUNCTIONS	LCD INDICATION															
<div><div><div>Green double flash Delayed start</div><div>Red double flash High alarm</div><div>Orange double/single flash Memory full</div><div>Green single flash Logging, no alarm</div><div>Red single flash Low alarm</div><div>Orange single flash every 60 sec Low battery</div><div>No LEDs flash Logger stopped or battery empty</div></div></div>	<div><div><div>Green triple flash Logger full, no alarm on the channel</div><div>Red triple flash Logger full, alarm on the channel</div><div>Green double flash Delayed start</div><div>Green single flash Logging, no alarm</div><div>Red single flash Logging, low alarm on the channel</div><div>Red double flash Logging, high alarm on the channel</div><div>No LEDs flash Logger stopped or battery empty</div></div></div>	<div><div><div>Green double flash Every 20 seconds: logger full, no alarm</div><div>Green single flash Every 30 seconds: delayed start Every 20 seconds: low battery, logging, no alarm Every 10 seconds: logging, no alarm</div><div>Red/Green single flash Every 20 seconds: logger full, last value equal to or exceeds the low or high alarm</div><div>Red double flash Every 10 seconds: logging, high alarm Every 20 seconds: logging, high alarm, low battery</div><div>Red single flash Every 10 seconds: logging, low alarm Every 20 seconds: logging, low alarm, low battery</div><div>No LEDs flash LEDs disabled during configuration to save battery power and increase logging life / logger stopped / battery empty</div></div></div>	<div><div>TW-USB-1-LCD & TW-USB-2-LCD</div><div><div>Maximum logged value symbol</div><div>Relative Humidity symbol*</div><div>Negative symbol -</div><div>100.5%RH</div><div>Reading</div><div>Temperature scale</div><div>Minimum logged value symbol</div><div>5°C°F</div></div><div>TW-USB-TC-LCD</div><div><div>Temperature scale symbols</div><div>8888.5</div><div>Maximum/Minimum logged value symbol</div><div>°C°F</div><div>5</div></div></div>	<table><tr><th>Display</th><th>Logger Status</th><th>Explanation</th></tr><tr><td>d5</td><td>Delayed Start</td><td>This is shown when the logger is set to start at a specific data and time*</td></tr><tr><td>P5</td><td>Push to Start</td><td>This is shown when the logger is setup for "Push to start" logging</td></tr><tr><td>log</td><td>Logging</td><td>This is shown when the logger is running in "LCD off" mode, and the button is pressed. The display clears again after three seconds</td></tr><tr><td>---</td><td>Stopped</td><td>If the logger has not been set to log and the button is pressed, three dashes are displayed for three seconds</td></tr></table> <p>* If the logger is set to "LCD off" or "LCD on for 30 seconds" mode, then this will only be shown after the button is pressed. Otherwise the display will remain blank.</p>	Display	Logger Status	Explanation	d5	Delayed Start	This is shown when the logger is set to start at a specific data and time*	P5	Push to Start	This is shown when the logger is setup for "Push to start" logging	log	Logging	This is shown when the logger is running in "LCD off" mode, and the button is pressed. The display clears again after three seconds	---	Stopped	If the logger has not been set to log and the button is pressed, three dashes are displayed for three seconds
Display	Logger Status	Explanation																	
d5	Delayed Start	This is shown when the logger is set to start at a specific data and time*																	
P5	Push to Start	This is shown when the logger is setup for "Push to start" logging																	
log	Logging	This is shown when the logger is running in "LCD off" mode, and the button is pressed. The display clears again after three seconds																	
---	Stopped	If the logger has not been set to log and the button is pressed, three dashes are displayed for three seconds																	