

The Bluetooth® word mark and logos are registered trademarks owned by Bluetooth SIG, Inc. and any use of such marks by ThermoWorks is under license.

iPod, iPhone and iPad are trademarks of Apple Inc., registered in the U.S. and other countries



**ThermoWorks**

# BlueTherm® IR (MFi)

## INSTRUMENT RECORD CARD

Model Order Code



BlueTherm IR (MFi) 179-402

Serial No. \_\_\_\_\_

Calibrated by \_\_\_\_\_ Date \_\_\_\_\_

Emissivity	32°F (0°C)	212°F (100°C)

This instrument has been checked or calibrated against reference instrument(s) calibrated by a UKAS Accredited Calibration Laboratory, which are traceable, via International Agreement, to all major National Standards, including NIST.

## SPECIFICATIONS

<b>Range</b>	-58 to 482°F (-50 to 250°C)
<b>Resolution</b>	0.1°
<b>Accuracy</b>	±3.6°F (±2.0°C) or 2% of reading (whichever is greater)
<b>Battery</b>	1 x AAA NiMH Rechargeable / up to 36 hours*
<b>Sensor</b>	Infrared
<b>Optics</b>	5:1
<b>Emissivity</b>	0.95 (software selectable)
<b>Dimensions</b>	10.24 H x 1.57 W inches (260 H x 40 W mm)
<b>Weight</b>	0.20 lb. (90g)
<b>Distance</b>	65 feet (20m)

\*Battery life depends on host, connection method and sample rate.



**Before using the BlueTherm IR, please read the care and use section of this guide.**

### CONNECTION

Pairing the BlueTherm® IR via Bluetooth® – ensure suitable software has been installed on the display device being used to monitor the BlueTherm IR. The BlueTherm IR will communicate with either ThermaData® Studio on a PC or Laptop, HACCP Mobile® for a mobile device or customer's own application.

Switch unit on and use the settings section of your device software to pair the BlueTherm IR.

**iPhone/iPod/iPad go to settings/general/Bluetooth and select the serial number (found on the end cap) of your BlueTherm IR from the list. If a password is requested to complete the pairing operation use 1234. Not all devices require a password.**

### AUTO-RECONNECTION TO iOS DEVICES

(For BlueTherm IR firmware R1.5.0 and above) - When connected the firmware revision number can be found through the BlueTherm App.

When pairing to an iOS device (entering PIN) the BlueTherm IR stores the iOS device's address. If connection is lost or broken the BlueTherm IR will try to reconnect every 30 seconds. While the BlueTherm IR is trying to reconnect extra battery power is used so it is recommended to switch off the BlueTherm unit when not being used. To clear the stored iOS Device's address - carry out a reset while holding down the BlueTherm TRANSFER button - 1 'red' flash followed by 5 'blue' flashes shows success.

**Note:** auto-reconnection to Android, PC or Laptops is handled by the host software or App.

### INSTRUMENT OPERATION

Turn the BlueTherm IR on by pressing the button on the front label. Point the aperture of the BlueTherm IR to the substance, medium or surface to be measured. The reading may take several seconds to stabilize, depending on the nature of the measurement.

### BUTTON FUNCTIONS

Transmit/On-Off button - this button has three functions. If the BlueTherm IR is 'off' pressing will turn the BlueTherm IR 'on' and the LED will flash red. When the BlueTherm IR is 'on' pressing it can send a reading to the paired device with compatible software and the LED will flash blue. Pressing and holding for three seconds will turn the BlueTherm IR 'off' and the LED will flash blue and then red.

### OPEN CIRCUIT/FAULTY PROBE

If the BlueTherm IR has developed an 'open circuit' fault the device software will display 'Err'. Contact ThermoWorks.

### SENSORS

The BlueTherm IR uses an infrared sensor with a distance ratio of 5:1 to take surface temperature measurements. The unit should be allowed to stabilize to ambient temperature for best accuracy.

### BATTERY STATUS

This is indicated in the device software. The display device requests a battery level from the BlueTherm IR.

**Please note** - the battery is factory fitted and is not user replaceable. Please return to ThermoWorks for replacement.

### CHARGING

**Please note - measurement accuracies are not guaranteed while charging.**

BlueTherm IRs can be charged from a PC, laptop, USB wall charger or USB car charger. The BlueTherm IR can be charged while switched on or off. A red LED will be displayed when the BlueTherm IR is charging. If the red LED flashes during charging then an error has occurred - contact ThermoWorks.

Remove the protective rubber cover at the top of the unit to gain access to the Mini USB socket. Charging will automatically finish when the battery is full, which should take less than two hours.

### RESET

If the unit fails to communicate the battery may be discharged. Recharge, test connection with mobile device and if communication still fails perform a hardware reset.

A reset switch is located under the protective rubber cover on the top of the BlueTherm IR. Gently pull back the protective rubber cover to gain access to the switch. Press a blunt object such as a ball-point pen into the dimple on the right of the charging socket **no further than 1/8 inch** and release. A red LED will flash momentarily a few seconds after releasing.

### MOBILE APP

The BlueTherm IR is compatible with HACCP Mobile, a Smartphone app free for download at iTunes™ and Google Play™. HACCP Mobile allows HACCP checklists to be stored on a Smartphone or tablet for paperless recording of HACCP temperatures that download to a PC. A free PC desktop utility is required to email checklists to handheld devices. For more information and to download the HACCP Mobile Desktop Utility, visit the HACCP Mobile webpage at [www.thermoworks.com/software/haccp\\_mobile.html](http://www.thermoworks.com/software/haccp_mobile.html).

### SOFTWARE

The BlueTherm IR works with ThermaData Studio software for the PC. The software and quick start guide are available for free download at [www.thermoworks.com/software](http://www.thermoworks.com/software).

### GUARANTEE

The BlueTherm IR carries a two-year warranty against defects in either components or workmanship.

During this period, products that prove to be defective will, at the discretion of ThermoWorks, be either repaired or replaced without charge. The product warranty does not cover damage caused by fair wear and tear, abnormal storage conditions, incorrect use, accidental misuse, abuse, neglect, misapplication or modification. Full details of liability are available with ThermoWorks' Terms & Conditions of Sale at [www.thermoworks.com](http://www.thermoworks.com). In line with our policy of continuous development, we reserve the right to amend our product specification without prior notice.



**ThermoWorks**

741 E. Utah Valley Dr., American Fork, UT 84003  
Ph: 801-756-7705 Fax: 801-756-8948  
[www.thermoworks.com](http://www.thermoworks.com)



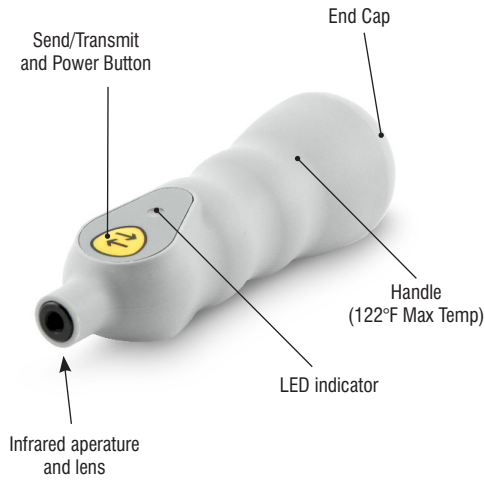
Made for **Android™** Made for **Windows™**

## Operating Instructions

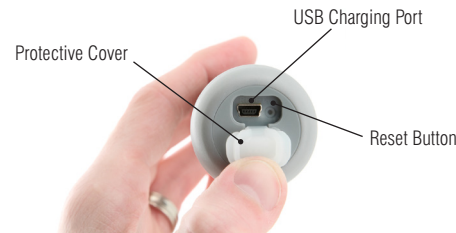
## BLUETHERM® IR CARE & USE

The BlueTherm IR is a precision infrared thermometer and with proper care will last for years of use. Please follow the guidelines below:

- BlueTherm is NOT waterproof and should not be submersed in liquid. Use a sanitizing wipe to clean all parts of the BlueTherm IR.
- Make sure that the protective rubber cover is securely in place over the charging port before use. Failure to secure the cover will allow liquid ingress through the USB connector, which will cause the unit to fail. For replacement of protective cover call ThermoWorks.
- RESET BUTTON:** If unit fails to communicate, recharge and retest communication with mobile device. **PRESS THE RESET BUTTON AS A LAST RESORT, AND ONLY BY A TRAINED INDIVIDUAL.** (NOTE: Press the RESET button very slightly and release (no more than 1/8-inch) with a blunt object like a ball point pen, NOT a paperclip. Wait 1-2 seconds and LED will flash Red once to confirm. Forcing past 1/8-inch will tear the rubber seal and may cause damage to internal components.)
- It is strongly recommended to use the clear silicone rubber boot accessory for use in kitchens, prep areas, and where splash risk may be high.
- Do NOT expose the handle to temperatures above 122°F (50°C).
- Keep infrared lens clean and free of obstruction. Clean carefully with sanitizing wipe.
- Never attempt to remove the end cap of the BlueTherm IR.
- Do NOT allow oils or food to collect on handle. Clean frequently with sanitizing wipe.
- Use care when connecting/disconnecting charging cable.



Silicone Rubber Boot



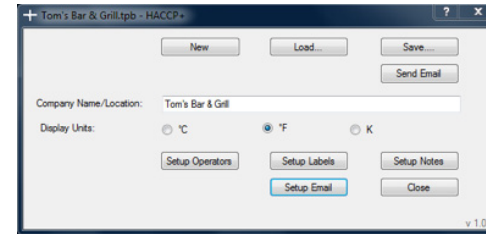
Charging Connection and Reset Button

**PROTECTIVE COVER SHOULD BE SECURELY IN PLACE BEFORE USE.**

## HACCP MOBILE® QUICK START GUIDE

### CREATING CHECKLISTS

- Download and install the free HACCP Mobile Desktop Software for Windows® at [www.thermoworks.com/software/haccp\\_mobile.html](http://www.thermoworks.com/software/haccp_mobile.html) to create checklists and email them to your mobile device.
- Open the software, select NEW to start a new checklist or LOAD to open an existing one.
- Create Operators (users), Labels (food items) with hi/lo limits, Notes (corrective actions), and Emails to send checklists and reports to.
- When finished with the profile setup, save to the PC and click 'Send Email' to send the checklist to the mobile device. (Note: one checklist can be stored on a mobile device at a time).



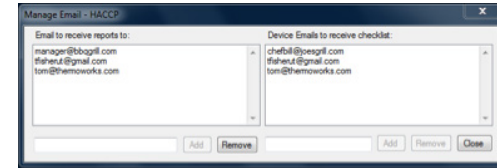
HACCP Mobile Desktop Software

### TAKING READINGS

Install the HACCP Mobile App from iTunes™ (free) or Google Play™ (free).

- Pair the BlueTherm IR to the mobile device under Settings/Bluetooth® using code 1234. (See Operating Instructions for more details)
- Open the email client on the mobile device that the checklist was sent to, click on the attached file, and select 'Open in HACCP' to store the checklist file to HACCP Mobile.
- Open the HACCP Mobile APP on the mobile device, select 'Operator' and the main screen will display the current temperature.
- Select a food item to measure (Label/Item), point BlueTherm IR at product, wait for the reading to stabilize, and click 'Save' to store the reading.

- If the current reading is below the low limit the temperature display will change to blue. If the current reading is above the high limit the display will change to red, and if within limits will display black.
- Add a Note or corrective action. Choose a note that was created with the checklist or add a new one, then click Save to store the note with the reading. A confirmation window will confirm that the reading was saved.



Manage Email Screen

### EMAIL RESULTS

Select 'View Readings' to view all readings stored on the mobile device.

- Select 'Email Results' and choose the email addresses to send the results.
- Once the email client is opened, more email addresses can be included.
- The email will arrive to the recipients as a CSV text file.

### OTHER SETTINGS

Select 'Probe Info' to view information about the BlueTherm IR.

- Select 'Settings' to change the sample rate, eliminate the prompt for a corrective action, turn the audio on/off, and change the temperature scale.
- Select 'Operator' to change the current user while running the APP.



HACCP Mobile Main Screen